

Harbwr Porthmadog Harbour

Mae'r slanel yn newid cwrs yn rheolaidd. Cynghorir bod morwyr yn cysylltu gyda'r Harbwrfeistr am y wybodaeth diweddaraf.

The channel changes course regularly. Please contact the Harbourmaster for the latest information.

01766 512927 / 07879 433147
VHF: 12 / 16

MORFA BYCHAN

CWT POWDR

BORTH Y GEST

CEI BALAST

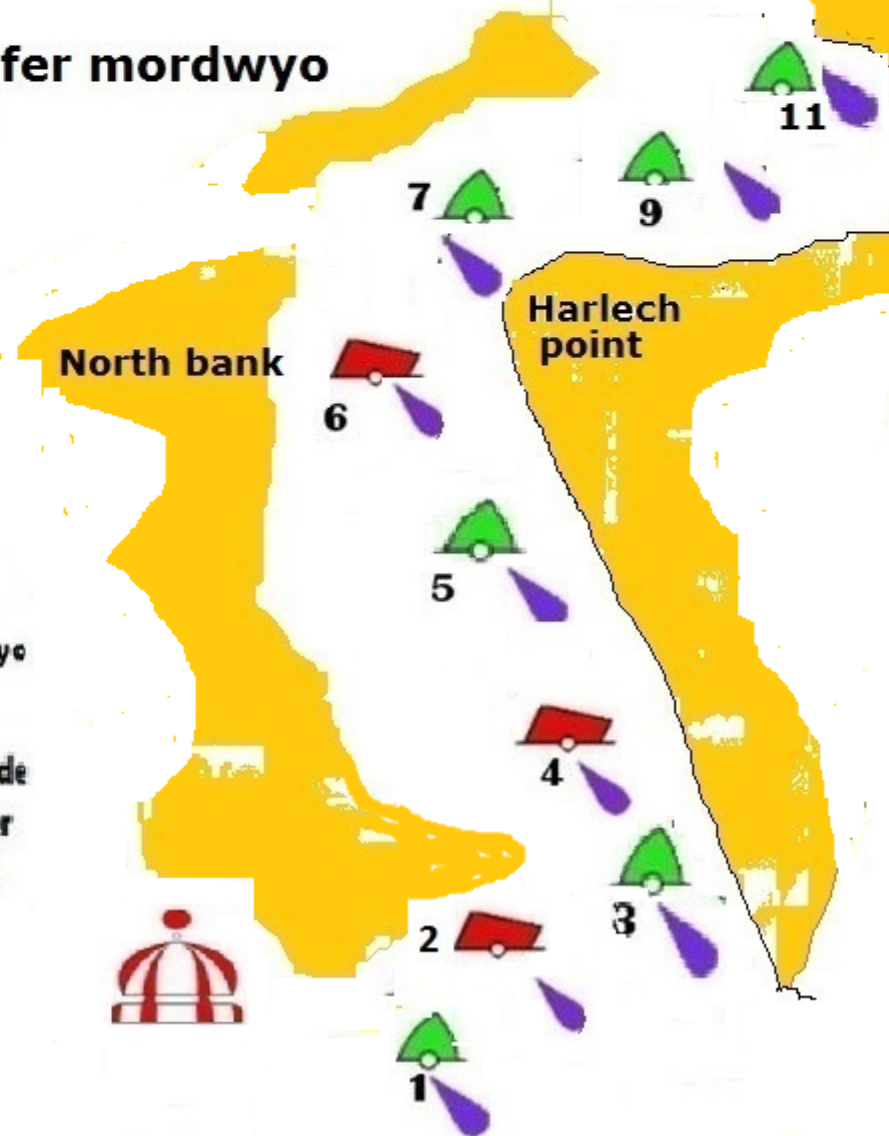
Nid yw cael ei ddefnyddio ar gyfer mordwyo
Not to be used for navigation

Harbwr Porthmadog Harbour
Latitude & longitude
As from the **20/09/2016**



Cynghorir morwyr i beidio â mordwyo dros y draethell oni bai Oddi fewn 2 awr pob ochr pen llanw (dibynnol ar gyflwr y môr) I-gychod gyda drafft fwy na 1.5m cynghorir morwyr i beidio mordwyo Dros y draethell oddi fewn 1.5 awr bob ochr pen llanw.

The channel should not be used at any time, other than 2hrs Either side Of High water (Dependant on sea state) Vessels with A draft greater Than 1.5 should only use the Channel 1.5hrs Either side of high water.



Fairway	LFlw 10s	52° 52. 351 N	004° 10. 013 W
1	Q FL G	52° 52. 366 N	004° 09. 472 W
2	Q FL R	00° 00. 000 N	000° 00. 000 W
3	FL G 3s	52° 52. 492 N	004° 08. 975 W
4	FL R(2)5s	52° 52. 795 N	004° 09. 240 W
5	FL G(2)5s	52° 53. 080 N	004° 09. 377 W
6	FL R (3)10s	52° 53. 428 N	004° 09. 646 W
7	FL G (3)10s	52° 53. 787' N	004° 09. 353 W
9	FL G (4)15s	52° 54. 099 N	004° 09. 099 W
11	FL G (5) 20s	52° 54. 353 N	004° 08. 905 W
Temp	Unlit	52° 52. 488 N	004° 09. 054 W
8	FL R (4)15s	52° 54. 521 N	004° 09. 068 W
10	FL R 2.5s	52° 54. 587 N	004° 09. 005 W
13	FL G 2s	52° 54. 604 N	004° 08. 644 W
12	FL R 4s	52° 54. 638 N	004° 08. 302 W
14	FL R 6s	52° 54. 764 N	004° 08. 147 W
15	FL G (2) 5s	52° 54. 884 N	004° 07. 968 W
17	FL G 6s	52° 55. 015 N	004° 07. 866 W

Harbwrfeistr Harbourmaster
malcolmhumphreys@gwynedd.gov.uk